



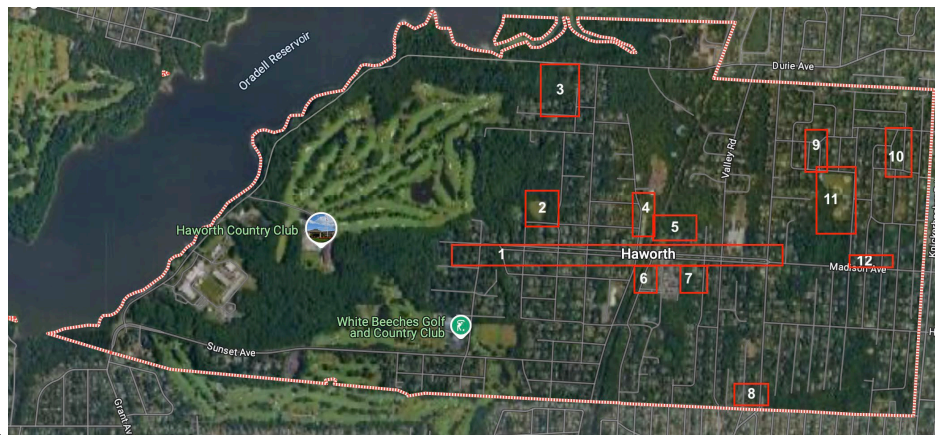
**Elizabeth Stewart
Consulting Arborist**

NJ Licensed Tree Expert #531

NJ ISA Arborist #1380A / Tree Risk Assessment Qualified

Haworth Final Report Street Tree Inventory 2024

Haworth is a town in Bergen County NJ and is 1.9 sq. miles. Inventory for 660 tagged trees in 12 identified green spaces throughout the Borough was completed in September 2024. The inventory was conducted during 10 hands-on sessions with a hired NJ LTE Consulting Arborist leading the inventory and 6 members of the Haworth Shade Tree Commission assisting. Tree inventory sessions included tagging each tree with an aluminum numbered tag, collecting data, and training the volunteers on tree ID, tree attributes, and tree health. These green spaces were chosen to be representative of the tree types, age, and condition of trees found throughout the Borough.



Inventory for 12 green spaces throughout the Borough as indicated below including parks, public buildings, wooded areas, and landscaped green spaces such as major street medians. Areas numbered corresponds to map in Appendix A.

- #1 - Haworth Ave Median – mix of landscaped and wooded
- #2 - Myrtle St Field – mix of landscaped and wooded
- #3 - Haworth Swim Club – wooded area within and around
- #4 - Park St Park - landscaped
- #5 - Duck Pond – landscaped area around pond
- #6 - Terrace St Parking area - landscaped
- #7 - Borough Hall & Library - landscaped
- #8 - Chestnut Bend – landscaped
- #9 - Green Space - Beacon / Pleasant - wooded
- #10 - Green Space - Prospect / Harrison - wooded
- #11 - Memorial Field – mix of landscape and wooded
- #12 - Green Space - Madison - wooded

The survey includes the date of survey, sites by area location identifying existing trees in each. Stainless steel numbered tags were screwed in on each tree leaving room for growth. For smaller trees < 4' DBH the

tags were wired on to a sturdy branch. Tree species, tree DBH size, number of stems if multiple, current/mature height, basic condition level 2 inspection, and maintenance as needed was documented according to the NJUCF Grant requirements. Additional notes included if there was a memorial plaque adjacent to a tree. Stumps were also noted as part of the inventory to help with maintenance needs. The final inventory was presented to the Borough in an Excel spreadsheet identifying each tree by tag number and area location. Now that the tree inventory is complete it will be up to the Borough to keep it up to date. This data will be used to identify current species, age, and condition of trees in open spaces in order to plan future funding for tree maintenance and tree planting.

The information from the tree inventory will be used to determine priority removals, pruning, other maintenance needs by condition, and tree planting needs. The CFMP (Community Forestry Management Plan) goal is to plant 100 trees with a goal of 350 total over time. The inventory showed green spaces identified as fairly well stocked or wooded areas that would not be planted. The 350 trees would need to be planted along both green spaces and along streets in order to meet the goal so this inventory was useful information. It was anticipated in the original plan that the DPW foreman would spend approximately 14hrs planning and forecasting future plantings, however with the help of the consulting arborist doing the survey, his time was freed up to focus on the immediate maintenance needs identified in the survey. The arborist helped coordinate a fall planting of 18 trees this fall to start the process with more expected in the next 3 years.

Summary:

Current total number of tagged trees: 660 – a few tags are one number but include groups of similar species/sized trees in natural areas. 2 tags were dropped and lost mid-inventory.

Current total number of stumps: 16

Current total number of vacant sites: N/A for this type of survey

Overall the current health of the surveyed trees is at 70% trees in good condition.

Genus/Species composition: 75 tree types identified

- 25% *Quercus sp.* (oak) – 170 trees total with 73 *Q. palustris* (pin), 56 *Q. rubra* (red), 11 *Q. velutina* (black), 23 *Q. alba* (white), 6 *Q. acutissima* (sawtooth), 1 *Q. macrocarpa* (bur).
- 15% *Acer sp.* (maple) – 143 trees total with 74 *A. rubrum* (red), 38 *A. platanoides* (Norway), 20 *A. saccharum* (sugar), 8 *A. palmatum* (Japanese), 3 *A. saccharinum* (silver)
- 3.9% *Prunus serrulata* (flowering cherry) – 26 trees
- 4% *Platanus x acerifolia* (London planetree) + *Platanus occidentalis* (sycamore) = 28 trees
- 3% *Picea abies* (Norway spruce) -21 trees
- 2.8% *Pinus strobus* (white pine) – 19 trees
- 2.4% *Juniperus virginiana* (Eastern redcedar) - 16 trees
- 2.4% *Nyssa sylvatica* (tupelo) – 16 trees
- 2.2% *Liriodendron tulipifera* (tulip poplar) - 15 trees
- 1.5% *Fagus grandifolia* (beech) – 10 trees

There is a good mix of species among the other 37.8% of the total 75 tree types identified with no more than 1.5% (less than 10 trees of each) including *Prunus serotina* (black cherry), *Juglans nigra* (black walnut), *Betula lenta* (cherry birch), *Carya sp.* (hickory), *Ulmus sp.* (elm), *Ginkgo*, and *Zelkova*. Replanting should take into account the distribution of current trees continuing to diversify the tree population.

Size class distribution

The size of trees were in a range that would be expected for the population of trees surveyed. In the wooded areas, trees that were currently classified as “Large” had a smaller DBH size due to the competition for sun causing the trees to grow straight and narrow. Trees in landscaped areas showed the typical size mix of older trees in the 13-28” DBH range with more recently planted trees in the 0-12” DBH class size. These were also most of the smaller species of trees. The largest 6 trees in the 51-60” range were found in wooded or native areas that were left intact around community spaces such as the swim club, Prospect Green Space, and Haworth Ave Meridian. Over 70% of the trees were expected to become large trees when mature while 56% of that population was currently large. This data indicates that the green spaces are providing and are anticipated to continue to provide a good amount of canopy cover for the Borough.

- 0-12” – 280 trees / 42%
- 13-22” – 174 trees / 26%
- 23-28” – 126 trees / 19%
- 29-40” – 80 trees / 12%
- 41-50” – 19 trees / 2.8%
- 51-60” – 6 trees (sycamore, red maple, red oak) / 0.9%

	Current Height	Mature Height
Small (<25ft)	98	59
Medium (25-50 ft)	172	97
Large (>50ft)	372	488

Note 16 stumps not included

Tree condition distribution

- Good – 471 trees / 71%
- Fair – 148 trees / 22%
- Poor/Very poor – 39 trees / 6%
- Dead/Dying – 15 trees / 2%
- Stump – 16 trees / 2%

The trees surveyed are in overall good condition. Trees in wooded areas were rated higher due to their location in areas where some noted decay or other defects are more tolerated.

Replanting in some of the public spaces is a current practice for the Borough - when a tree is removed it is placed on the replanting list as budget permits. Restocking some of these wooded areas would include fencing off desirable saplings to prevent deer grazing/rubbing as older trees die and canopy opens to allow sun for new growth.

Fagus grandifolia (beech) trees in Myrtle St wooded area – only a section of the woods was inventoried and all beech in this woods had signs of Beech Leaf Disease (BLD). Trees were from 6” DBH to 22” DBH. 2 *Fagus sylvatica* (cooper beech) are showing early signs and are significant landscape specimens. It was decided to treat the trees in attempts to save them.

Recommended maintenance (listed on Excel spreadsheet as separate tab on bottom)

29 trees were marked for removal for being 75% or more dead. 15 trees were dead/dying with 10 being *Fraxinus sp.* (Ash) due to the Emerald Ash Borer (EAB). Stumps were included in the maintenance list for removal.

Other trees needing maintenance included pruning, removing invasive poison ivy and porcelain berry vines, and treating 2 beech trees for Beech Leaf Disease that are in the early stages of the disease and are mature desirable trees.

It should be noted that any discrepancies for calculating percentages above are due to trees with multi-stems or a tag that has multiple trees listed under one number.

Future inventory for Borough owned street trees is the next goal of the town using a GIS based system that can easily be updated and used by the DPW and Shade Tree Commission for communication and record keeping.

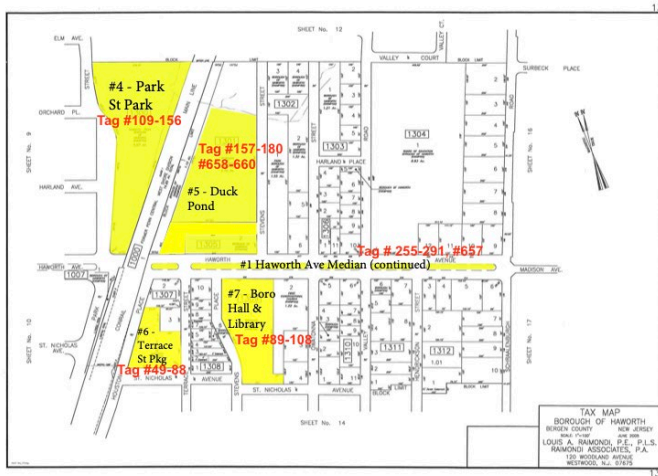
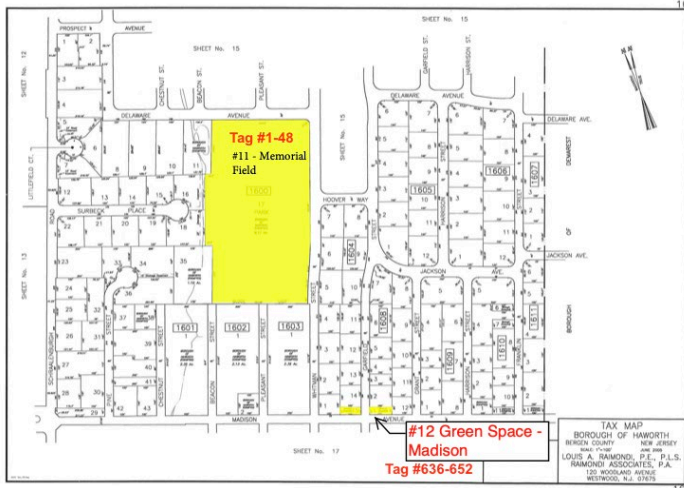
The Excel inventory is a separate document that was given to the Borough and can be uploaded into the grant portal along with this report.

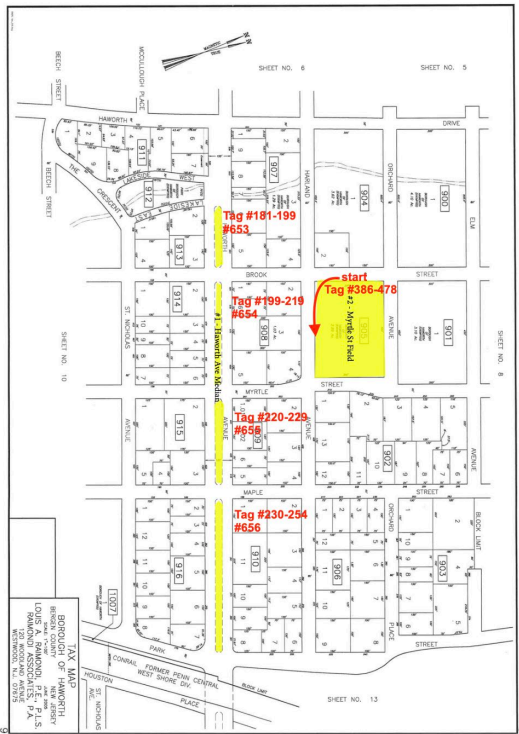
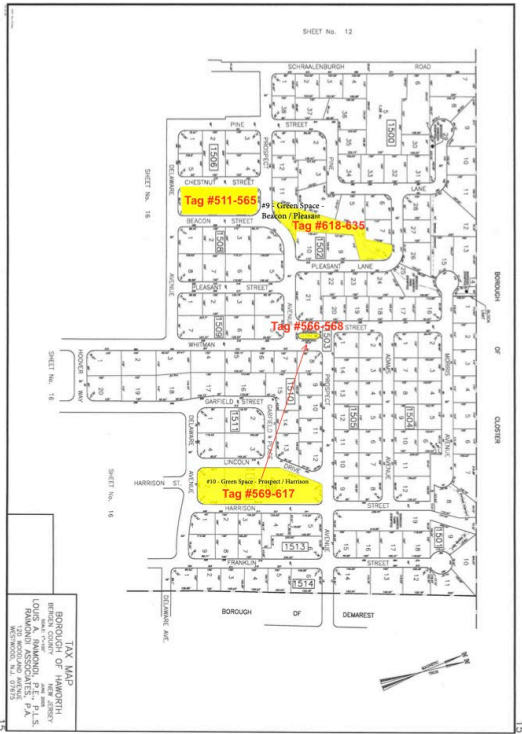
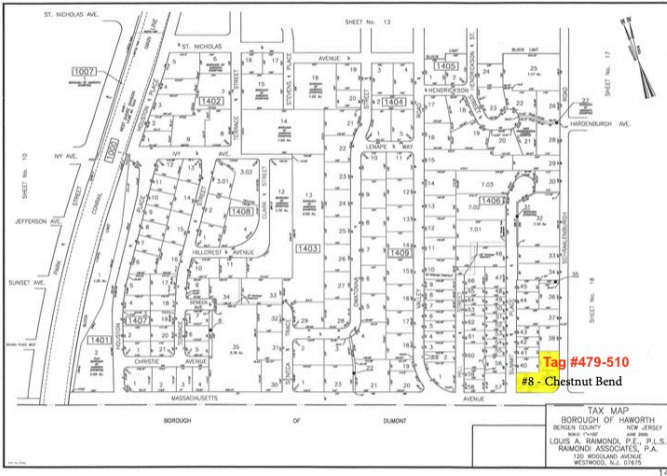
In addition to completing this partial tree survey, the members of the Shade Tree Commission received over 50hrs of one-on-one training in tree ID and basic assessment. You should be proud of Haworth's tree community as your continued support of trees are a benefit to your community.



Members of the Shade Tree Commission with Councilwoman Siciliano on the first day of tree tagging at tree tag #1

Appendix A: Inventory Maps of 12 Survey Areas





HAWORTH NJ GREEN SPACES TREE SURVEY INVENTORY - 2024									
	DATE: 5-19-24	COMMUNITY: HAWORTH NJ							
		LOCATION: Memorial Field, Whitman St. - Map Area 11 / 40.963383216568694, -73.9796331544513							
TAG #	Common Name	SPECIES	DBH (2")	Current Height	Mature Height	CONDITION	Notes		
1	red maple	<i>Acer rubrum</i>	50	M	Lg	Good	2 trunks		
2	white oak	<i>Quercus alba</i>	28	M	Lg	Good			
3	white oak	<i>Quercus alba</i>	48	Lg	Lg	Good			
4	Eastern redcedar	<i>Juniperus virginiana</i>	20	Lg	Lg	Fair			KEY
5	sugar maple	<i>Acer saccharum</i>	24	Lg	Lg	Fair			HEIGHT
6	sugar maple	<i>Acer saccharum</i>	28	Lg	Lg	Poor	Lg lateral decay in limb	SM	< 25FT
7	tupelo	<i>Nyssa sylvatica</i>	22	Lg	Lg	Fair	some deadwood	Med	25-50 FT
8	Japanese maple	<i>Acer japonicum</i>	6	Sm	Sm	Good	Bocce Ct dedication planter - Al Carano	LG	> 50FT
9	Spruce	<i>Picea sp.</i>	12	Med	Med	Good	Bocce Ct dedication planter - Al Carano		CONDITION
10	Japanese maple	<i>Acer japonicum</i>	8	Sm	Sm	Good	Bocce Ct dedication planter - Al Carano	GOOD	< 10% DIEBACK
11	pin oak	<i>Quercus palustris</i>	28	Lg	Lg	Good		FAIR	10-25% DIEBACK
12	black oak	<i>Quercus velutina</i>	26	Lg	Lg	Good		POOR	25-50% DIEBACK
13	pin oak	<i>Quercus palustris</i>	28	Lg	Lg	Good		VERY POOR	50-75% DIEBACK
14	pin oak	<i>Quercus palustris</i>	22	Lg	Lg	Good		DYING/DEA	> 75% DIEBACK
15	pin oak	<i>Quercus palustris</i>	28	Lg	Lg	Fair			NOTES
16	sugar maple	<i>Acer saccharum</i>	34	Lg	Lg	Good	2 trunks		LOCATION NOTES
17	tupelo	<i>Nyssa sylvatica</i>	26	Lg	Lg	Good			MAINTENANCE NEEDED
18	Norway maple	<i>Acer platanoides</i>	20	Lg	Lg	Good			INSECT OR DISEASE
19	red maple	<i>Acer rubrum</i>	14	Lg	Lg	Good			
20	sugar maple	<i>Acer saccharum</i>	30	Lg	Lg	Good			
21	red maple	<i>Acer rubrum</i>	20	Lg	Lg	Good			
22	red maple	<i>Acer rubrum</i>	24	Lg	Lg	Fair			
23	red maple	<i>Acer rubrum</i>	20	Lg	Lg	Fair			
24	sugar maple	<i>Acer saccharum</i>	22/16	Lg	Lg	Fair	2 trunks - poison ivy at base, prune deadwood, remove hardware on trunk		
25	red maple	<i>Acer rubrum</i>	20	Lg	Lg	Good	poison ivy at base, prune deadwood		
26	red maple	<i>Acer rubrum</i>	22	Lg	Lg	Good			
27	blue spruce	<i>Picea pungens</i>	10	Med	Lg	Fair			
28	flowering cherry	<i>Prunus serrulata</i>	12	Sm	Sm	Poor			
29	Crimson King maple	<i>Acer platanoides 'Crimson King'</i>	4	Sm	M	Good			
30	Norway spruce	<i>Picea abies</i>	8	Med	Lg	Good			
31	Norway spruce	<i>Picea abies</i>	10	Med	Lg	Good			
32	Norway spruce	<i>Picea abies</i>	6	Sm	M	Good			

TAG #	Common Name	SPECIES	DBH (2")	Current Height	Mature Height	CONDITION	Notes		
33	flowering cherry	<i>Prunus serrulata</i>	10	Sm	Sm	Good			
34	pin oak	<i>Quercus palustris</i>	28	Lg	Lg	Good	along Delaware Ave, utility lines adjacent, trees pruned for clearance		
35	pin oak	<i>Quercus palustris</i>	22	Lg	Lg	Fair	along Delaware Ave, utility lines adjacent, trees pruned for clearance		
36	Norway maple	<i>Acer platanoides</i>	22	Lg	Lg	Good	along Delaware Ave, utility lines adjacent, trees pruned for clearance		
37	Norway maple	<i>Acer platanoides</i>	16	Lg	Lg	Poor	along Delaware Ave, utility lines adjacent, trees pruned for clearance		
38	Norway maple	<i>Acer platanoides</i>	24	Lg	Lg	Fair	along Delaware Ave, utility lines adjacent, trees pruned for clearance		
39	Norway maple	<i>Acer platanoides</i>	20	Lg	Lg	Good	along Delaware Ave, utility lines adjacent, trees pruned for clearance		
40	Norway maple	<i>Acer platanoides</i>	24	Lg	Lg	Fair	along Delaware Ave, utility lines adjacent, trees pruned for clearance		
41	pin oak	<i>Quercus palustris</i>	38	Lg	Lg	Good	on corner Delaware & Whitman		
42	pin oak	<i>Quercus palustris</i>	22	Lg	Lg	Good	along Whitman		
43	Norway maple	<i>Acer platanoides</i>	8	Med	Lg	Good	along Whitman		
44	pin oak	<i>Quercus palustris</i>	50	Lg	Lg	Good	along Whitman		
45	tupelo	<i>Nyssa sylvatica</i>	26	M	Med	Poor	along Whitman		
46	tupelo	<i>Nyssa sylvatica</i>	9	Sm	Med	Good	5 trees, only tagged one, in dense wooded area		
46	tupelo	<i>Nyssa sylvatica</i>	10	Sm	Med	Good	5 trees, only tagged one, in dense wooded area		
46	tupelo	<i>Nyssa sylvatica</i>	6	Sm	Med	Good	5 trees, only tagged one, in dense wooded area		
46	tupelo	<i>Nyssa sylvatica</i>	7	Sm	Med	Good	5 trees, only tagged one, in dense wooded area		
46	tupelo	<i>Nyssa sylvatica</i>	7	Sm	Med	Good	5 trees, only tagged one, in dense wooded area		
47	sassafras	<i>Sassafras albidum</i>	2	Sm	Sm	Good			
48	sassafras	<i>Sassafras albidum</i>	3	Sm	Sm	Good			
	DATE: 5/30/24	COMMUNITY: HAWORTH NJ							
		LOCATION: Terrace St. Parking Area - Map Area 6 / 40.959778687819544, -73.98988119264106							
TAG #	Common Name	SPECIES	DBH (2")	Current Height	Mature Height	CONDITION	Notes		
49	Norway maple	<i>Acer platanoides</i>	16	M	Lg	Very poor	no risk - no targets		
50	cottonwood	<i>Populus sp.</i>	15 & 13	Lg	Lg	Fair			
51	honeylocust	<i>Gleditsia triacanthos</i>	2.5	Sm	Med	Good			
52	red maple	<i>Acer rubrum</i>	20	Lg	Lg	Good			
53	silver maple	<i>Acer saccharinum</i>	26	Lg	Lg	Fair			
54	red oak	<i>Quercus rubrum</i>	4	Sm	Lg	Fair	multistem sucker growth		
55	red maple	<i>Acer rubrum</i>	20	Lg	Lg	Fair			
56	red maple	<i>Acer rubrum</i>	12	Med	Lg	Good			
57	Ash	<i>Fraxinus sp.</i>	8	Med	Lg	Good			
58	Zelkova	<i>Zelkova serrata</i>	8	Med	M	Good			
59	Ash	<i>Fraxinus sp.</i>	8	Med	Lg	Good			
60	red oak	<i>Quercus rubrum</i>	19	Lg	Lg	Good			
61	pin oak	<i>Quercus palustris</i>	40	Lg	Lg	Good	Prune deadwood		

TAG #	Common Name	SPECIES	DBH (2")	Current Height	Mature Height	CONDITION	Notes		
62	pin oak	<i>Quercus palustris</i>	16	Lg	Lg	Good	Prune deadwood		
63	ash	<i>Fraxinus sp.</i>	20	Lg	Lg	Dying	EAB - REMOVE		
64	Norway maple	<i>Acer platanoides</i>	20	Lg	Lg	Fair			
65	Norway maple	<i>Acer platanoides</i>	26	Lg	Lg	Good			
66	Japanese maple	<i>Acer palmatum</i>	2	Sm	Sm	Poor	Air Spade to investigate roots and remedy if able		
67	honeylocust	<i>Gleditsia triacanthos</i>	6	Sm	Med	Good			
68	red maple	<i>Acer rubrum</i>	4	Med	Lg	Good			
69	Crimson King maple	<i>Acer platanoides 'Crimson King'</i>	4	Sm	Med	Fair			
70	Zelkova	<i>Zelkova serrata</i>	4	Sm	Med	Good	Air Spade to investigate roots and remedy if able		
71	Norway spruce	<i>Picea abies</i>	4	Sm	Lg	Good			
72	Japanese maple	<i>Acer palmatum</i>	2	Sm	Sm	Fair	Air Spade to investigate roots and remedy if able		
73	Bradford pear	<i>Pyrus calleryana</i>	18	Med	Med	Fair			
74	Bradford pear	<i>Pyrus calleryana</i>	12	Med	Med	Fair			
75	Bradford pear	<i>Pyrus calleryana</i>	16	Med	Med	Fair			
76	London plantree	<i>Platanus x acerifolia</i>	12	Lg	Lg	Good			
77	London plantree	<i>Platanus x acerifolia</i>	12	Lg	Lg	Good			
78	pin oak	<i>Quercus palustris</i>	20	Lg	Lg	Good			
78	chokecherry	<i>Prunus virginiana</i>	2	Sm	Med	Good			
	STUMP	STUMP	12						
80	sweetgum	<i>Liquidambar styraciflua</i>	14	Med	Med	Good			
81	hornbeam	<i>Carpinus caroliniana</i>	2	Sm	Sm	Good			
82	flowering cherry	<i>Prunus serrulata</i>	18	Med	Med	Good	along train tracks		
83	flowering cherry	<i>Prunus serrulata</i>	12	Sm	Med	Fair	along train tracks		
84	flowering cherry	<i>Prunus serrulata</i>	12	Sm	Med	Fai	along train tracks		
85	Norway spruce	<i>Picea abies</i>	12	Med	Lg	Good	along train tracks		
86	black oak	<i>Quercus velutina</i>	33	Lg	Lg	Good	along train tracks		
87	Norway spruce	<i>Picea abies</i>	10 & 11	Med	Med	Good	along train tracks		
88	Norway spruce	<i>Picea abies</i>	5	Med	LG	Good	along train tracks - 3 Trees 1 tag		
88	Norway spruce	<i>Picea abies</i>	5	Med	LG	Good	along train tracks - 3 Trees 1 tag		
88	Norway spruce	<i>Picea abies</i>	5	Med	LG	Good	along train tracks - 3 Trees 1 tag		
	DATE: 5/30/24	COMMUNITY: HAWORTH NJ							
		LOCATION: Borough Hall & Library - Map Area 7 / 40.96021632062522, -73.98836020585289							
TAG #	Common Name	SPECIES	DBH (2")	Current Height	Mature Height	CONDITION	Notes		
89	red oak	<i>Quercus rubra</i>	20	Med	Lg	Fair			
90	pin oak	<i>Quercus palustris</i>	16	Lg	Lg	Good			
91	red oak	<i>Quercus rubra</i>	30	Lg	Lg	Good			

TAG #	Common Name	SPECIES	DBH (2")	Current Height	Mature Height	CONDITION	Notes		
92	pin oak	<i>Quercus palustris</i>	14	Lg	Lg	Good			
93	pin oak	<i>Quercus palustris</i>	24	Lg	Lg	Good	Prune deadwood		
94	pin oak	<i>Quercus palustris</i>	14	Lg	Lg	Good			
95	zelkova	<i>Zelkova serrata</i>	4	Sm	Sm	Fair			
96	silver maple	<i>Acer saccharinum</i>	28	Lg	Lg	Fair			
97	river birch	<i>Betula nigra</i>	16	Lg	Lg	Good			
98	river birch	<i>Betula nigra</i>	18	Lg	Lg	Good			
99	Colorado blue spruce	<i>Picea pungens</i>	4 to 6	Med	Lg	6 dead	13 in same area 1 tag		
99						2 poor			
99						3 fair			
99						2 good			
100	sycamore	<i>Platanus occidentalis</i>	40	Lg	Lg	Good			
101	Japanese maple	<i>Acer palmatum</i>	4	Sm	Sm	Good			
102	red pine	<i>Pinus resinosa</i>	10	Sm	Med	Good	Landscape bed		
103	copper beech	<i>Fagus sylvatica</i>	6	Sm	Lg	Good	Landscape bed		
104	Japanese maple	<i>Acer palmatum</i>	4	Sm	Sm	Good			
105	Colorado blue spruce	<i>Picea pungens</i>	6	Sm	Lg	Good			
106	redbud	<i>Cercis canadensis</i>	4	Sm	Sm	Good			
107	hackberry	<i>Celtis occidentalis</i>	16	Sm	Sm	Good			
108	Japanese maple	<i>Acer palmatum</i>	6	Sm	Sm	Good			
	DATE: 6/4/24	COMMUNITY: HAWORTH NJ							
		LOCATION: Park St. Park - Map Area 4							
TAG #	Common Name	SPECIES	DBH (2")	Current Height	Mature Height	CONDITION	Notes		
109	ash	<i>Fraxinus sp.</i>	6	Med	Lg	Good			
110	Norway maple	<i>Acer platanoides</i>	12	Med	Med	Good			
111	black cherry	<i>Prunus serotina</i>	6	Sm	Med	Fair			
112	red maple	<i>Acer rubrum</i>	26	Lg	Lg	Good			
114	tulip poplar	<i>Liriodendron tulipifera</i>	10	Med	Lg	Fair			
115	red maple	<i>Acer rubrum</i>	10	Med	Lg	Poor	in naturalized wooded setting		
116	Norway maple	<i>Acer platanoides</i>	4	Med	lg	Good			
117	Norway maple	<i>Acer platanoides</i>	10	Lg	Lg	Good			
118	redcedar	<i>Juniperus virginiana</i>	10	Med	Lg	Good			
119	tulip poplar	<i>Liriodendron tulipifera</i>	16	Lg	Lg	Good			
120	red maple	<i>Acer rubrum</i>	12 & 13	Lg	Lg	Good			
121	pin oak	<i>Quercus palustris</i>	24	Lg	Lg	Good	prune deadwood & elevate over playground		
122	pin oak	<i>Quercus palustris</i>	22	Lg	Lg	Good	prune deadwood & elevate over playground		

TAG #	Common Name	SPECIES	DBH (2")	Current Height	Mature Height	CONDITION	Notes		
123	redcedar	<i>Juniperus virginiana</i>	24	Lg	Lg	Good	prune deadwood & elevate over playground		
124	sycamore	<i>Platanus occidentalis</i>	54	Lg	Lg	Good			
125	sycamore	<i>Platanus occidentalis</i>	52	Lg	Lg	Good			
126	black cherry	<i>Prunus serotina</i>	22	Lg	Lg	Fair			
127	redcedar	<i>Juniperus virginiana</i>	18	Lg	Lg	Good			
128	tulip poplar	<i>Liriodendron tulipifera</i>	26	Lg	Lg	Good	bee/wasp in canker		
129	redcedar	<i>Juniperus virginiana</i>	12	Lg	Lg	Good			
130	redcedar	<i>Juniperus virginiana</i>	18	Lg	Lg	Good			
131	redcedar	<i>Juniperus virginiana</i>	24	Lg	Lg	Fair	prune deadwood		
132	redcedar	<i>Juniperus virginiana</i>	24	Lg	Lg	Good			
133	sycamore	<i>Platanus occidentalis</i>	42	Lg	Lg	Good			
134	redcedar	<i>Juniperus virginiana</i>	34	Lg	Lg	Good	3 leaders		
135	flowering cherry	<i>Prunus serrulata</i>	6	Sm	Sm	Good			
136	zelkova	<i>Zelkova serrata</i>	6	Sm	Med	Good			
137	redcedar	<i>Juniperus virginiana</i>	24	Lg	Lg	Good			
138	sycamore	<i>Platanus occidentalis</i>	58	Lg	Lg	Good			
139	sycamore	<i>Platanus occidentalis</i>	42	Lg	Lg	Good			
140	redcedar	<i>Juniperus virginiana</i>	40	Lg	Lg	Good			
141	redcedar	<i>Juniperus virginiana</i>	24	Lg	Lg	Good			
142	redcedar	<i>Juniperus virginiana</i>	20	Lg	Lg	Good			
143	redcedar	<i>Juniperus virginiana</i>	34	Lg	Lg	Good			
144	ginkgo	<i>Ginkgo biloba</i>	10	Med	Lg	Good	tennis ct. along street		
145	ginkgo	<i>Ginkgo biloba</i>	10	Med	Lg	Good	tennis ct. along street		
146	ginkgo	<i>Ginkgo biloba</i>	10	Med	Lg	Good	tennis ct. along street		
147	ginkgo	<i>Ginkgo biloba</i>	14	Med	Lg	Good	tennis ct. along street		
148	ginkgo	<i>Ginkgo biloba</i>	15	Med	Lg	Good	tennis ct. along street		
149	ginkgo	<i>Ginkgo biloba</i>	12	Med	Lg	Good	tennis ct. along street		
150	Japanese tree lilac	<i>Syringa reticulata</i>	6	Sm	Sm	Good			
151	Colorado blue spruce	<i>Picea pungens</i>	18	Lg	Lg	Good	bed by tennis ct.		
152	hawthorne	<i>Crataegus sp.</i>	8	sm	sm	Good	bed by tennis ct.		
153	Colorado blue spruce	<i>Picea pungens</i>	16	Lg	Lg	Good	bed by tennis ct.		
154	Norway maple	<i>Acer platanoides</i>	24	Lg	Lg	Poor	Remove - by train track		
	Haworth Ave Cernter median by train track								
155	pin oak	<i>Quercus palustris</i>	42	Lg	Lg	Good	median by train track		
156	hemlock	<i>Tsuga canadensis</i>	18	Sm	Lg	Good	median by train track		
	DATE: 6/4/24	COMMUNITY: HAWORTH NJ							

TAG #	Common Name	SPECIES	DBH (2")	Current Height	Mature Height	CONDITION	Notes
LOCATION: Duck Pond - Map Area 5 / 40.96129178007448, -73.98846056216367							
TAG #	Common Name	SPECIES	DBH (2")	Current Height	Mature Height	CONDITION	Notes
157	sycamore	<i>Platanus occidentalis</i>	31	Lg	Lg	Good	
158	red maple	<i>Acer rubrum</i>	32	Med	Lg	Good	
159	sycamore	<i>Platanus occidentalis</i>	30	Lg	Lg	Good	
160	red maple	<i>Acer rubrum</i>	10	Med	Lg	Good	
161	ash	<i>Fraxinus sp.</i>	30	Lg	Lg	Very Poor	EAB in decline
162	red maple	<i>Acer rubrum</i>	10	Med	Lg	Good	wound on trunk
658	hawthorne	<i>Crataegus viridis</i> 'Winter King'	2	Sm	Med	Good	planted 2024
659	linden	<i>Tilia americana</i> 'Green Spire'	2	Sm	Lg	Good	planted 2024
660	hawthorne	<i>Crataegus viridis</i> 'Winter King'	2	Sm	Med	Good	planted 2024
163	red maple	<i>Acer rubrum</i>	8	Sm	Lg	Good	
164	weeping willow	<i>Salix babylonica</i>	28	Med	Med	Fair	
165	river birch	<i>Betula nigra</i>	32	Med	Med	Good	3 trunks
166	dawn redwood	<i>Metasequoia glyptostroboides</i>	22	Lg	Lg	Good	Memorial plaque: Ned Kriegman
167	flowering cherry	<i>Prunus serrulata</i>	8	Sm	Med	Good	
168	flowering cherry	<i>Prunus serrulata</i>	18	Med	Med	Dead	Remove
169	flowering cherry	<i>Prunus serrulata</i>	8	Sm	Med	Good	
170	red maple	<i>Acer rubrum</i>	10	Med	Lg	Good	
171	river birch	<i>Betula nigra</i>	46	Med	Med	Good	4 trunks
172	red spruce	<i>Picea rubens</i>	12	Med	Med	Good	
173	flowering cherry	<i>Prunus serrulata</i>	12	Med	Med	Good	
174	weeping willow	<i>Salix babylonica</i>	28	Lg	Lg	Fair	
175	weeping willow	<i>Salix babylonica</i>	16	Med	Lg	Good	
176	hawthorne	<i>Crataegus sp.</i>	10	Med	Med	Fair	
177	red spruce	<i>Picea rubens</i>	8	Med	Med	Good	group of 5, same tag #
177	red spruce	<i>Picea rubens</i>	8	Med	Med	Good	group of 5, same tag #
177	red spruce	<i>Picea rubens</i>	10	Med	Med	Good	group of 5, same tag #
177	red spruce	<i>Picea rubens</i>	10	Med	Med	Good	group of 5, same tag #
177	red spruce	<i>Picea rubens</i>	12	Med	Med	Good	group of 5, same tag #
178	red maple	<i>Acer rubrum</i>	18	Lg	Lg	Good	
179	sycamore	<i>Platanus occidentalis</i>	30	Lg	Lg	Good	
180	ash	<i>Fraxinus sp.</i>	20	Lg	Lg	Fair	
DATE: 6/19/24 & 6/26/24							
COMMUNITY: HAWORTH NJ							
LOCATION: Haworth Ave - Map Area 1 / 40.961152, -73.997441							
TAG #	Common Name	SPECIES	DBH (2")	Current Height	Mature Height	CONDITION	Notes

TAG #	Common Name	SPECIES	DBH (2")	Current Height	Mature Height	CONDITION	Notes		
	Lakeside to Brook St.								
181	white oak	<i>Quercus alba</i>	40	Lg	Lg	Good			
182	tupelo	<i>Nyssa sylvatica</i>	20	Lg	Lg	Good			
183	red maple	<i>Acer rubrum</i>	26	Lg	Lg	Fair			
184	Norway spruce	<i>Picea abies</i>	16	Lg	Lg	Good			
185	holly	<i>Ilex opaca</i>	10	Sm	Lg	Fair	2 trunks		
186	redcedar	<i>Juniperus virginiana</i>	14	Lg	Lg	Fair			
187	elm	<i>Ulmus americana</i>	10	Lg	Lg	Fair			
188	redcedar	<i>Juniperus virginiana</i>	32	Lg	Lg	Fair	2 trunks		
189	redcedar	<i>Juniperus virginiana</i>	12	Lg	Lg	Fair			
190	black oak	<i>Quercus velutina</i>	30	Lg	Lg	Good			
	STUMP		12						
191	Norway spruce	<i>Picea abies</i>	12	Lg	Lg	Good			
192	sugar maple	<i>Acer saccharinum</i>	24	Lg	Lg	Fair	Watch List - oin decline		
653	tupelo	<i>Nyssa sylvatica</i>	2	Sm	m	good	planted 2024		
193	white oak	<i>Quercus alba</i>	32	Lg	Lg	Fair	bleeding canker on trunk, <i>Phytophthora ramorum</i> ? Watch for sudden oak death		
194	white pine	<i>Pinus strobus</i>	18	Lg	Lg	Good			
195	black oak	<i>Quercus velutina</i>	34	Lg	Lg	Fair	Prune large deadwood over road		
196	zelkova	<i>Zelkova serrata</i>	6	Sm	M	Good			
197	pin oak	<i>Quercus palustris</i>	26	Lg	Lg	Fair	mechanical damage at base by road		
	STUMP		48				by Brook St.		
198	red oak	<i>Quercus rubra</i>	28	Lg	Lg	Good			
199	red oak	<i>Quercus rubra</i>	30	Lg	Lg	Fair			
	Brook St. to Myrtle St.								
200	red oak	<i>Quercus rubra</i>	2	Sm	Lg	Good			
201	red oak	<i>Quercus rubra</i>	2	Sm	Lg	Good			
202	flowering cherry	<i>Prunus serrulata</i>	2	Sm	Sm	Poor			
203	red oak	<i>Quercus rubra</i>	4	Sm	Lg	Good			
654	hawthorne	<i>Crataegus viridis</i> "Winter King"	2	Sm	m	Good	planted 2024		
	STUMP		24						
204	red oak	<i>Quercus rubra</i>	26	Lg	Lg	Fair	possible lightening damage trunk		
205	red spruce	<i>Picea rubens</i>	5	Sm	Med	Good			
206	red oak	<i>Quercus rubra</i>	24	Lg	Lg	Good			
207	red oak	<i>Quercus rubra</i>	26	Lg	Lg	Good			
208	pin oak	<i>Quercus palustris</i>	26	Lg	Lg	Poor	Remove as budget permits		
209	pin oak	<i>Quercus palustris</i>	26	Lg	Lg	Fair			
210	red oak	<i>Quercus rubra</i>	24	Lg	Lg	Fair			

TAG #	Common Name	SPECIES	DBH (2")	Current Height	Mature Height	CONDITION	Notes		
211	pin oak	<i>Quercus palustris</i>	28	Lg	Lg	Poor	Remove as budget permits		
212	pin oak	<i>Quercus palustris</i>	28	Lg	Lg	Fair	possible signs of <i>Phytophthora ramorum</i> , watch for sudden oak death		
213	red oak	<i>Quercus rubra</i>	28	Lg	Lg	Poor	Remove as budget permits		
214	red oak	<i>Quercus rubra</i>	30	Lg	Lg	Poor	Remove as budget permits		
215	hornbeam upright	<i>Carpinus betulus 'Fastigiata'</i>	10	Sm	Sm	Good			
216	red oak	<i>Quercus rubra</i>	14	Med	Lg	Good			
217	katsura	<i>Cercidiphyllum japonicum</i>	16	Med	Med	Good			
218	pin oak	<i>Quercus palustris</i>	10	Med	Lg	Good			
219	ash	<i>Fraxinus sp.</i>	26	Lg	Lg	Good			
	Myrtle St. to Maple Ave								
220	white oak	<i>Quercus alba</i>	8	Med	Med	Good			
221	black oak	<i>Quercus velutina</i>	40	Lg	Lg	Good			
222	copper beech	<i>Fagus sylvatica purpurea</i>	22	Lg	Lg	Fair	symptoms of Beech Leaf Disease (BLD) - treated Sept 2024, across 440 Haworth Ave		
655	tupelo	<i>Nyssa sylvatica</i>	2	Sm	m	Good	planted 2024, deer completely broke tree crown off while rutting, remove		
223	red oak	<i>Quercus rubra</i>	22	Lg	Lg	Good			
224	flowering dogwood	<i>Cornus florida</i>	10	Sm	Sm	very poor	Remove		
225	pin oak	<i>Quercus palustris</i>	50	Lg	Lg	Good			
226	flowering plum	<i>Prunus cerasifera 'Atropurpurea'</i>	4	Sm	Sm	very poor	Remove - has black knot		
227	ash	<i>Fraxinus sp.</i>	16	Lg	Lg	very poor	Remove - has Emerald Ash Borer (EAB)		
228	flowering plum	<i>Prunus cerasifera 'Atropurpurea'</i>	6	Sm	Sm	Fair	black knot		
229	red maple	<i>Acer rubrum</i>	20	Lg	Lg	Good			
	Maple St. to Park St.								
230	white oak	<i>Quercus alba</i>	34	Lg	Lg	Good			
231	hemlock	<i>Tsuga canadensis</i>	12	Med	Med	Dead	Remove low priority		
232	hemlock	<i>Tsuga canadensis</i>	24	Lg	Lg	Fair			
233	yew	<i>Taxus sp</i>	12	M	M	Fair			
	STUMP		14						
234	yew	<i>Taxus sp</i>	14	Med	Med	Fair			
235	yew	<i>Taxus sp</i>	12	Med	Med	Fair			
236	white oak	<i>Quercus alba</i>	28	Lg	Lg	Good			
237	yew	<i>Taxus sp</i>	10	M	M	Fair			
238	Norway maple	<i>Acer platanoides</i>	37	Lg	Lg	Good	4 trunks		
239	pin oak	<i>Quercus palustris</i>	36	Lg	Lg	Good			
240	red maple	<i>Acer rubrum</i>	22	Lg	Lg	Fair			
241	Eastern redcedar	<i>Juniperus virginiana</i>	22	Lg	Lg	Good			
242	Eastern redcedar	<i>Juniperus virginiana</i>	12	Lg	Lg	Good			
243	Eastern redcedar	<i>Juniperus virginiana</i>	7	Lg	Lg	Fair			

TAG #	Common Name	SPECIES	DBH (2")	Current Height	Mature Height	CONDITION	Notes		
244	Eastern redcedar	<i>Juniperus virginiana</i>	24	Lg	Lg	Good			
656	tupelo	<i>Nyssa sylvatica</i>	2	Sm	Med	Good			
245	red oak	<i>Quercus rubra</i>	14	Med	Lg	Good			
246	red oak	<i>Quercus palustris</i>	14	Med	Lg	Good			
247	pin oak	<i>Quercus palustris</i>	40	Lg	Lg	Good			
248	white oak	<i>Quercus alba</i>	30	Lg	Lg	Good			
249	Eastern redcedar	<i>Juniperus virginiana</i>	10	Med	Med	Fair			
250	Eastern redcedar	<i>Juniperus virginiana</i>	12	Med	Med	Good			
	STUMP		12						
251	pin oak	<i>Quercus palustris</i>	23	Lg	Lg	Good			
252	pin oak	<i>Quercus palustris</i>	28	Lg	Lg	Good			
253	pin oak	<i>Quercus palustris</i>	32	Lg	Lg	Good			
254	pin oak	<i>Quercus palustris</i>	20	Lg	Lg	Good			
	Park St. to Owatonna St.								
255	flowering cherry	<i>Prunus serrulata</i>	8	Sm	Sm	Good			
256	flowering cherry	<i>Prunus serrulata</i>	4	Sm	Sm	Fair			
257	flowering cherry	<i>Prunus serrulata</i>	10	Sm	Sm	Good			
258	Callery pear	<i>Pyrus calleryana</i>	14	Med	Med	Good	split in crotch not active		
259	red oak	<i>Quercus rubra</i>	10	Lg	Lg	Good			
260	pin oak	<i>Quercus palustris</i>	28	Lg	Lg	Fair	Prune large deadwood - remove poison ivy		
261	red maple	<i>Acer rubrum</i>	18	Lg	Lg	Good			
262	linden	<i>Tilia sp.</i>	14	Med	m	Good			
263	purleleaf plum	<i>Prunus ceraceiflua</i>	7	Sm	Sm	Fair	balck knot - fair to poor cond.		
264	ash	<i>Fraxinus sp.</i>	13	Med	Lg	Poor	EAB - REMOVE		
265	ash	<i>Fraxinus sp.</i>	14	Lg	Lg	Poor	EAB - REMOVE		
266	sugar maple	<i>Acer saccharum</i>	10	Med	Med	Good			
267	pin oak	<i>Quercus palustris</i>	25	Lg	Lg	Good	PRUNE small deadwood		
268	red maple	<i>Acer rubrum</i>	6	Med	Lg	Good			
269	ginkgo	<i>Ginkgo biloba</i>	3	Sm	Lg	Good			
270	pin oak	<i>Quercus palustris</i>	16	Lg	Lg	Good			
	Owatonna St. to Valley Rd								
271	sawtooth oak	<i>Quercus acutissima</i>	9	Med	Lg	Good			
272	pin oak	<i>Quercus palustris</i>	19	Lg	Lg	Good			
273	flowering cherry	<i>Prunus serrulata</i>	5	Sm	Sm	Good			
274	pin oak	<i>Quercus palustris</i>	9	Med	Lg	Good			
275	flowering cherry	<i>Prunus serrulata</i>	4	Sm	Sm	Good			
276	red oak	<i>Quercus rubra</i>	15	Lg	Lg	Good			

TAG #	Common Name	SPECIES	DBH (2")	Current Height	Mature Height	CONDITION	Notes		
	Valley Rd to Schraalenburgh Rd								
277	black oak	<i>Quercus velutina</i>	18	Lg	Lg	Good	PRUNE small deadwood		
657	tupelo	<i>Nyssa sylvatica</i>	2	Sm	Med	Good	planted 2024		
278	flowering cherry	<i>Prunus serrulata</i>	7	Med	Med	Good			
279	sawtooth oak	<i>Quercus acutissima</i>	9	Med	Med	Good			
280	sawtooth oak	<i>Quercus acutissima</i>	8	Med	Med	Good			
281	ginkgo	<i>Ginkgo biloba</i>	7	Med	Lg	Good			
	STUMP		10						
	STUMP		12						
282	Callery pear	<i>Pyrus calleryana</i>	7	Sm	Med	Poor	decay at trunk base		
283	bur oak	<i>Quercus macrocarpa</i>	40	Lg	Lg	Good			
284	Callery pear	<i>Pyrus calleryana</i>	6	Med	Med	Good			
285	kousa dogwood	<i>Cornus kousa</i>	7	Sm	Sm	Good			
286	Callery pear	<i>Pyrus calleryana</i>	7	Sm	Med	Fair			
287	kousa dogwood	<i>Cornus kousa</i>	8	Sm	Sm	Fair			
288	sawtooth oak	<i>Quercus acutissima</i>	12	Med	Lg	Good			
289	sawtooth oak	<i>Quercus acutissima</i>	10	Med	Lg	Good			
290	sawtooth oak	<i>Quercus acutissima</i>	6	Med	Lg	Good			
291	pin oak	<i>Quercus palustris</i>	22	Lg	Lg	Good			
	STUMP		14						
	DATE: 7/11/24 & 9/5/24	COMMUNITY: HAWORTH NJ							
		LOCATION: Haworth Swim Club, Map Area #3 / 40.96696692314133, -73.98851420690302							
TAG #	Common Name	SPECIES	DBH (2")	Current Height	Mature Height	CONDITION	Notes		
292	horsechestnut	<i>Aesculus hippocastanum</i>	21	Lg	Lg	Good	2 tunks		
293	red maple	<i>Acer rubrum</i>	24	Lg	Lg	Good			
294	flowering dogwood	<i>Cornus florida</i>	15	Sm	Sm	Fair	form is poor, has 4 trunks		
295	white oak	<i>Quercus alba</i>	29	Lg	Lg	Fair			
296	white oak	<i>Quercus alba</i>	32	Lg	Lg	Good			
297	red oak	<i>Quercus rubra</i>	36	Lg	Lg	Good			
298	red oak	<i>Quercus rubra</i>	32	Lg	Lg	Good			
299	white oak	<i>Quercus alba</i>	34	Lg	Lg	Poor	REMOVE as resources permit - not high level		
300	Norway spruce	<i>Picea abies</i>	9	Med	Lg	Good			
301	white oak	<i>Quercus alba</i>	17	Lg	Lg	Good			
302	red oak	<i>Quercus rubra</i>	43	Lg	Lg	Good	PRUNE deadwood		
303	hickory	<i>Carya sp.</i>	20	Lg	Lg	Good			
304	hickory	<i>Carya sp.</i>	19	Lg	Lg	Good			

TAG #	Common Name	SPECIES	DBH (2")	Current Height	Mature Height	CONDITION	Notes		
305	white oak	<i>Quercus alba</i>	30	Lg	Lg	Good			
306	red oak	<i>Quercus rubra</i>	37	Lg	Lg	Good			
307	black walnut	<i>Juglans nigra</i>	25	Lg	Lg	Good			
308	Douglas fir	<i>Pseudotsuga menziesii</i>	9	Med	Lg	Good			
309	Douglas fir	<i>Pseudotsuga menziesii</i>	7	Med	Lg	Good			
310	Douglas fir	<i>Pseudotsuga menziesii</i>	5	Med	Lg	Good			
311	white oak	<i>Quercus alba</i>	34	Lg	Lg	Fair	PRUNE large deadwood		
312	black walnut	<i>Juglans nigra</i>	26	Lg	Lg	Good			
313	black walnut	<i>Juglans nigra</i>	23	Lg	Lg	Good			
314	red oak	<i>Quercus rubra</i>	44	Lg	Lg	Good			
315	black walnut	<i>Juglans nigra</i>	19	Lg	Lg	Fair	RE-INSPECT 2025		
316	white oak	<i>Quercus alba</i>	27	Lg	Lg	Good			
317	red oak	<i>Quercus rubra</i>	31	Lg	Lg	Good			
318	black walnut	<i>Juglans nigra</i>	16	Lg	Lg	Good			
319	red oak	<i>Quercus rubra</i>	24	Lg	Lg	Good			
320	white oak	<i>Quercus alba</i>	35	Lg	Lg	Good			
321	white oak	<i>Quercus alba</i>	24	Lg	Lg	Good			
322	white oak	<i>Quercus alba</i>	30	Lg	Lg	Good			
323	white oak	<i>Quercus alba</i>	35	Lg	Lg	Good	Memorial Bed "Hagan Hook Anderson" plaque		
324	red oak	<i>Quercus rubra</i>	36	Lg	Lg	Poor	RE-INSPECT 2025		
325	Colorado Blue Spruce	<i>Picea pungens</i>	7	Sm	Lg	Fair	plaque "In Honor of James Walls"		
326	flowering dogwood	<i>Cornus florida</i>	10	Sm	Sm	Fair			
327	white oak	<i>Quercus alba</i>	41	Lg	Lg	Good			
328	red oak	<i>Quercus rubra</i>	49	Lg	Lg	Good			
329	white oak	<i>Quercus alba</i>	34	Lg	Lg	Good			
330	red oak	<i>Quercus rubra</i>	56	Lg	Lg	Good	Remove poison ivy - cut at base		
331	red oak	<i>Quercus rubra</i>	24	Lg	Lg	Good			
332	red oak	<i>Quercus rubra</i>	43	Lg	Lg	Fair	RE-INSPECT 2025, Remove poison ivy - cut at base		
333	Norway spruce	<i>Picea abies</i>	21	Lg	Lg	Good			
334	red oak	<i>Quercus rubra</i>	44	Lg	Lg	Fair			
	STUMP		7						
335	red oak	<i>Quercus rubra</i>	36	Lg	Lg	Good			
336	red oak	<i>Quercus rubra</i>	38	Lg	Lg	Fair	Remove poison ivy - cut at base.		
337	red oak	<i>Quercus rubra</i>	27	Lg	Lg	Good			
338	Norway spruce	<i>Picea abies</i>	11	Med	Lg	Good			
339	Norway spruce	<i>Picea abies</i>	20	Lg	Lg	Good			
340	pin oak	<i>Quercus palustris</i>	18	Lg	Lg	Good			

TAG #	Common Name	SPECIES	DBH (2")	Current Height	Mature Height	CONDITION	Notes		
341	pin oak	<i>Quercus palustris</i>	17	Lg	Lg	Good			
342	red maple	<i>Acer rubrum</i>	29	Lg	Lg	Good			
343	DEAD	DEAD	11	Lg	Lg	DEAD	REMOVE as resources permit - not high level		
344	pin oak	<i>Quercus palustris</i>	30	Lg	Lg	Fair	PRUNE deadwood		
345	pin oak	<i>Quercus palustris</i>	22	Lg	Lg	Fair			
346	pin oak	<i>Quercus palustris</i>	41	Lg	Lg	Good			
347	red oak	<i>Quercus rubra</i>	24/30	Lg	Lg	Good	2 trunks		
348	white oak	<i>Quercus alba</i>	17	Lg	Lg	Good			
349	black oak	<i>Quercus veluntina</i>	39	Lg	Lg	Fair	can remove for project if goes ahead		
350	Japanese maple	<i>Acer palmatum</i>	7 + 9 + 7	Med	Med	Good	multi-stem		
351	red oak	<i>Quercus rubra</i>	47	Lg	Lg	Good			
352	Japanese maple	<i>Acer palmatum</i>	6	Sm	Sm	Good			
353	hornbeam	<i>Carpinus caroliniana</i>	4	Sm	Sm	Good			
354	purleleaf plum	<i>Prunus ceraceiflua</i>	2	Sm	Sm	Poor	Blackknot - REMOVE not urgen (to right of entrance)		
355	red oak	<i>Quercus rubra</i>	40	Lg	Lg	Good			
356	red oak	<i>Quercus rubra</i>	35	Lg	Lg	Good			
357	white oak	<i>Quercus alba</i>	24	Lg	Lg	Good			
358	(lost tag - no tree)								
359	flowering dogwood	<i>Cornus florida</i>	8	Sm	Sm	Fair			
360	flowering dogwood	<i>Cornus florida</i>	5	Sm	Sm	Fair			
361	red oak	<i>Quercus rubra</i>	57	Lg	Lg	Good			
362	red oak	<i>Quercus rubra</i>	26	Lg	Lg	Fair			
363	flowering dogwood	<i>Cornus florida</i>	6	Sm	Sm	Fair			
364	flowering dogwood	<i>Cornus florida</i>	8	Sm	Sm	Fair			
365	red oak	<i>Quercus rubra</i>	39	Lg	Lg	Fair			
366	red oak	<i>Quercus rubra</i>	32	Lg	Lg	Fair	by tennis cts.		
367	white pine	<i>Pinus strobus</i>	32	Lg	Lg	Good	poor form, pruned for wires		
368	red oak	<i>Quercus rubra</i>	48	Lg	Lg	Good	has lights attached		
369	tulip poplar	<i>Liriodendron tulipifera</i>	33	Lg	Lg	Good			
370	tulip poplar	<i>Liriodendron tulipifera</i>	30	Lg	Lg	Good			
371	tulip poplar	<i>Liriodendron tulipifera</i>	24	Lg	Lg	Good			
372	shagbark hickory	<i>Carya ovata</i>	20	Lg	Lg	Good			
373	tulip poplar	<i>Liriodendron tulipifera</i>	22	Lg	Lg	Good			
374	tulip poplar	<i>Liriodendron tulipifera</i>	40	Lg	Lg	Good			
375	pignut hickory	<i>Carya glabra</i>	11	Lg	Lg	Good			
376	black oak	<i>Quercus veluntina</i>	32	Lg	Lg	Poor	REMOVE - fungal decay along bark		
377	tulip poplar	<i>Liriodendron tulipifera</i>	24	Lg	Lg	Poor	REMOVE - large leder broken out		

TAG #	Common Name	SPECIES	DBH (2")	Current Height	Mature Height	CONDITION	Notes				
378	red oak	<i>Quercus rubra</i>	33	Lg	Lg	Good					
379	sugar maple	<i>Acer saccharum</i>	14	Lg	Lg	Fair	twin trunks				
380	red maple	<i>Acer rubrum</i>	20	Lg	Lg	Good	1 leader broken out				
381	pin oak	<i>Quercus palustris</i>	40	Lg	Lg	Fair					
282	red oak	<i>Quercus rubra</i>	27	Lg	Lg	Fair	Prune deadwood - next to path				
383	white pine	<i>Pinus strobus</i>	26	Lg	Lg	Good	poison ivy				
384	pin oak	<i>Quercus palustris</i>	34	Lg	Lg	Fair					
385	red oak	<i>Quercus rubra</i>	33	Lg	Lg	Good	prune Large deadwood - over path				
	DATE: 9/5/24 & 9/7/24		COMMUNITY: HAWORTH NJ								
	LOCATION: Myrtle St. Field, Map Area #2 (wooded area start Brook st. up to path mid-way on Harland Ave.)/ 40.96247150333033, -73.99575924886949										
TAG #	Common Name	SPECIES	DBH (2")	Current Height	Mature Height	CONDITION	Notes				
386	red oak	<i>Quercus rubra</i>	28	Lg	Lg	Good	phototrophic lean				
387	Norway maple	<i>Acer platanoides</i>	8 + 8	Med	Med	Good	2 leaders				
388	tupelo	<i>Nyssa sylvatica</i>	8	Med	Med	Good					
389	red maple	<i>Acer rubrum</i>	8	Med	Lg	Fair					
390	red maple	<i>Acer rubrum</i>	12	Med	Lg	Good					
391	red maple	<i>Acer rubrum</i>	16	Lg	Lg	Good					
392	white pine	<i>Pinus strobus</i>	7	Med	Lg	Good					
393	white pine	<i>Pinus strobus</i>	10	Med	Lg	Good					
394	white pine	<i>Pinus strobus</i>	7	Med	Lg	Good					
395	white pine	<i>Pinus strobus</i>	15	Med	Lg	Good					
396	white pine	<i>Pinus strobus</i>	10	Med	Lg	Good					
397	white pine	<i>Pinus strobus</i>	7	Med	Lg	Good					
398	walnut	<i>Juglans nigra</i>	14	Lg	Lg	Good					
399	white pine	<i>Pinus strobus</i>	8	Med	Lg	Good					
400	white pine	<i>Pinus strobus</i>	5	Med	Lg	Fair					
401	white pine	<i>Pinus strobus</i>	6	Med	Lg	Fair					
402	white pine	<i>Pinus strobus</i>	5	Med	Lg	Fair					
403	tulip poplar	<i>Liriodendron tulipifera</i>	12	Lg	Lg	Good					
404	sweetgum	<i>Liquidambar styraciflua</i>	21	Lg	Lg	Good					
405	elm	<i>Ulmus americana</i>	19	Lg	Lg	Good	borer holes along trunk				
406	red maple	<i>Acer rubrum</i>	16-14-9-14	Lg	Lg	Good	multi-stem				
407	Norway maple	<i>Acer platanoides</i>	14	Lg	Lg	Good					
408	pin oak	<i>Quercus palustris</i>	18	Lg	Lg	Good					
409	tulip poplar	<i>Liriodendron tulipifera</i>	10	Lg	Lg	Good					
410	black oak	<i>Quercus velutina</i>	44	Lg	Lg	Good	poison ivy				

TAG #	Common Name	SPECIES	DBH (2")	Current Height	Mature Height	CONDITION	Notes		
411	red maple	<i>Acer rubrum</i>	12	Lg	Lg	Good			
412	red maple	<i>Acer rubrum</i>	6	Lg	Lg	Good			
413	red maple	<i>Acer rubrum</i>	10	Lg	Lg	Good			
414	ash	<i>Fraxinus sp.</i>	16	Lg	Lg	Fair	poison ivy		
415	Norway maple	<i>Acer platanoides</i>	10	Med	Med	Fair			
416	Norway maple	<i>Acer platanoides</i>	18	Lg	Lg	Good			
417	black cherry	<i>Prunus serotina</i>	9	Med	Med	Fair			
418	Norway maple	<i>Acer platanoides</i>	12	Lg	Lg	Good			
419	black locust	<i>Robinia pseudoacacia</i>	16	Lg	Lg	Good			
420	Norway maple	<i>Acer platanoides</i>	12	Lg	Lg	Good			
421	black cherry	<i>Prunus serotina</i>	10	Lg	Lg	Good			
422	Norway maple	<i>Acer platanoides</i>	7	Lg	Lg	Good			
423	Norway maple	<i>Acer platanoides</i>	6	Lg	Lg	Good			
424	Norway maple	<i>Acer platanoides</i>	6	Lg	Lg	Good			
425	red maple	<i>Acer rubrum</i>	10	Med	Lg	Fair			
426	tulip poplar	<i>Liriodendron tulipifera</i>	18	Lg	Lg	Good			
427	Norway maple	<i>Acer platanoides</i>	10	Med	Med	Good			
428	cherry birch	<i>Betula lenta</i>	14	Lg	Lg	Good			
429	black oak	<i>Quercus veluntina</i>	23 & 32	Lg	Lg	Good	multi-stem		
430	elm	<i>Ulmus americana</i>	15	Lg	Lg	Good			
431	elm	<i>Ulmus americana</i>	15	Lg	Lg	Good			
432	pin oak	<i>Quercus palustris</i>	23	Lg	Lg	Good			
433	pin oak	<i>Quercus palustris</i>	30	Lg	Lg	Good			
434	Norway maple	<i>Acer platanoides</i>	10	Med	Med	Good			
435	black oak	<i>Quercus veluntina</i>	24	Lg	Lg	Fair			
436	sugar maple	<i>Acer saccharum</i>	10	Med	Med	Good			
437	red maple	<i>Acer rubrum</i>	24	Lg	Lg	Good			
438	Norway maple	<i>Acer platanoides</i>	8	Med	Med	Fair			
439	sycamore	<i>Platanus occidentalis</i>	32	Lg	Lg	Good			
440	red oak	<i>Quercus rubra</i>	6	Med	Lg	Fair			
441	red maple	<i>Acer rubrum</i>	8	Med	Lg	Fair			
442	tulip poplar	<i>Liriodendron tulipifera</i>	26	Lg	Lg	Good			
443	red maple	<i>Acer rubrum</i>	16	Lg	Lg	Good			
444	cherry birch	<i>Betula lenta</i>	7	Med	Med	Good			
445	red maple	<i>Acer rubrum</i>	22	Lg	Lg	Good			
446	cherry birch	<i>Betula lenta</i>	16	Lg	Lg	Good			
447	red maple	<i>Acer rubrum</i>	17	Med	Lg	Good			

TAG #	Common Name	SPECIES	DBH (2")	Current Height	Mature Height	CONDITION	Notes		
516	ash	<i>Fraxinus sp.</i>	18	Lg	Lg	Dead	REMOVE		
517	ash	<i>Fraxinus sp.</i>	24	Lg	Lg	Dead	REMOVE		
518	pin oak	<i>Quercus palustris</i>	34	Lg	Lg	Good	poison ivy		
519	pin oak	<i>Quercus palustris</i>	27	Lg	Lg	Good			
520	pin oak	<i>Quercus palustris</i>	19	Lg	Lg	Good	bacteria ooze		
521	purpleleaf plum	<i>Prunus cerasifera 'Atropurpurea'</i>	3	Sm	Sm	Poor	black knot		
522	pin oak	<i>Quercus palustris</i>	30	Lg	Lg	Good			
523	pin oak	<i>Quercus palustris</i>	19	Lg	Lg	Good			
524	red maple	<i>Acer rubrum</i>	24	Lg	Lg	Good			
525	pin oak	<i>Quercus palustris</i>	28	Lg	Lg	Good			
526	purpleleaf plum	<i>Prunus cerasifera 'Atropurpurea'</i>	5	Sm	Sm	Poor	black knot		
527	London planetree	<i>Platanus x acerifolia</i>	4	Sm	Lg	Good			
528	purpleleaf plum	<i>Prunus cerasifera 'Atropurpurea'</i>	3	Sm	Sm	V. poor	black knot		
529	red maple	<i>Acer rubrum</i>	25	Lg	Lg	Good			
530	sweetgum	<i>Liquidambar styraciflua</i>	24 & 24	Lg	Lg	Good	poison ivy		
531	ash	<i>Fraxinus sp.</i>	16	Lg	Lg	Dead	REMOVE		
532	red maple	<i>Acer rubrum</i>	13 & 8	Med	Lg	Dead	REMOVE		
533	ash	<i>Fraxinus sp.</i>	14 & 13	Lg	Lg	Dead	REMOVE		
534	red maple	<i>Acer rubrum</i>	49	Lg	Lg	Good			
535	sugar maple	<i>Acer saccharum</i>	17	Lg	Lg	Good			
536	honey locust	<i>Glenditsia triacanthos</i>	20	Lg	Lg	Good			
537	red maple	<i>Acer rubrum</i>	27	Lg	Lg	Good			
538	red maple	<i>Acer rubrum</i>	26	Lg	Lg	Good			
539	pin oak	<i>Quercus palustris</i>	32	Lg	Lg	Fair			
540	elm	<i>Ulmus americana</i>	7	Sm	Lg	Good			
541	ash	<i>Fraxinus sp.</i>	18	Lg	Lg	Dead	REMOVE - stalk		
542	ash	<i>Fraxinus sp.</i>	21 & 14	Lg	Lg	Dead	REMOVE		
543	ash	<i>Fraxinus sp.</i>	18	Lg	Lg	Dead	REMOVE		
544	red maple	<i>Acer rubrum</i>	8 + 15 + 7	Lg	Lg	Fair	multi-trunk		
545	red maple	<i>Acer rubrum</i>	12 + 12+ 16	Lg	Lg	Fair	multi-trunk		
546	honey locust	<i>Glenditsia triacanthos</i>	20	Lg	Lg	Good			
547	red maple	<i>Acer rubrum</i>	12	Lg	Lg	Good			
548	Douglas fir	<i>Pseudotsuga mensiesii</i>	14	Lg	Lg	Good			
549	Douglas fir	<i>Pseudotsuga mensiesii</i>	12	Lg	Lg	Good			
550	elm	<i>Ulmus americana</i>	22	Lg	Lg	Fair			
551	red maple	<i>Acer rubrum</i>	18	Lg	Lg	Good			
552	pin oak	<i>Quercus palustris</i>	26	Lg	Lg	Fair			

TAG #	Common Name	SPECIES	DBH (2")	Current Height	Mature Height	CONDITION	Notes
553	red maple	<i>Acer rubrum</i>	22	Lg	Lg	Good	
554	red maple	<i>Acer rubrum</i>	22	Lg	Lg	Good	
	STUMP		32				
555	ash	<i>Fraxinus sp.</i>	15	Lg	Lg	Dead	REMOVE - stalk
556	London planetree	<i>Platanus x acerifolia</i>	6	Sm	Lg	Good	
557	pin oak	<i>Quercus palustris</i>	34	Lg	Lg	Good	
558	honey locust	<i>Glenditsia triacanthos</i>	14	Lg	Lg	Good	
559	pin oak	<i>Quercus palustris</i>	29	Lg	Lg	Good	
560	London planetree	<i>Platanus x acerifolia</i>	6	Sm	Lg	Good	
561	hickory	<i>Carya sp.</i>	5	Sm	Med	Good	
562	flowering cherry	<i>Prunus serrulata</i>	8 + 7 + 6	Med	Med	Good	multi -trunk
563	red maple	<i>Acer rubrum</i>	24	Lg	Lg	Good	
564	flowering cherry	<i>Prunus serrulata</i>	4 to 6	Sm	Sm	Fair	stand of 16 trees similar size and condition
565	ash	<i>Fraxinus sp.</i>	8	Med	Lg	Fair	
	DATE: 9/16/24	COMMUNITY: HAWORTH NJ					
		LOCATION: Prospect/Whitman Green Space, Map Area #10a / 40.941273476423476, -73.98183721750362					
TAG #	Common Name	SPECIES	DBH (2")	Current Height	Mature Height	CONDITION	Notes
566	flowering cherry	<i>Prunus serrulata</i>	28	Sm	Sm	Good	
567	flowering dogwood	<i>Cornus florida</i>	8	Sm	Sm	Poor	
568	flowering dogwood	<i>Cornus florida</i>	9 + 11 + 11	Sm	Sm	Fair	1 dead leader
	DATE: 9/16/24	COMMUNITY: HAWORTH NJ					
		LOCATION: Prospect/Harrison Green Space, Map Area #10 / 40.965888, -73.976321					
TAG #	Common Name	SPECIES	DBH (2")	Current Height	Mature Height	CONDITION	Notes
569	white pine	<i>Pinus strobus</i>	31	Lg	Lg	Good	hit by lightening - old wound down trunk compartmentalized
570	ash	<i>Fraxinus sp.</i>	18	Lg	Lg	Poor	
571	white pine	<i>Pinus strobus</i>	28	Lg	Lg	Good	
572	hemlock	<i>Tsuga canadensis</i>	13	Lg	Lg	Fair	
573	willow	<i>Salix sp</i>	14	Med	Lg	Poor	
574	hemlock	<i>Tsuga canadensis</i>	4	Med	Lg	Fair	
575	purpleleaf plum	<i>Prunus cerasifera 'Atropurpurea'</i>	4	Sm	Sm	Poor	black knot
576	flowering cherry	<i>Prunus serrulata</i>	6	Sm	Sm	Good	
577	pin oak	<i>Quercus palustris</i>	5	Sm	Lg	Good	x 3 trees similar size and condition
578	Norway maple	<i>Acer platanoides</i>	6	Sm	Med	good	stand of 15 trees similar size and condition
579	hemlock	<i>Tsuga canadensis</i>	14	Med	Lg	Fair	
580	London planetree	<i>Platanus x acerifolia</i>	5	Med	Lg	Good	

TAG #	Common Name	SPECIES	DBH (2")	Current Height	Mature Height	CONDITION	Notes		
581	spruce	<i>Picea sp.</i>	12	Med	Lg	Good			
582	flowering cherry	<i>Prunus serrulata</i>	6	Sm	Sm	Good			
583	honey locust	<i>Glenditsia triacanthos</i>	12	Med	Med	Good			
584	pin oak	<i>Quercus palustris</i>	38	Lg	Lg	Good			
585	red maple	<i>Acer rubrum</i>	30	Lg	Lg	Good			
586	Norway maple	<i>Acer platanoides</i>	25	Lg	Lg	Good			
587	Eastern redcedar	<i>Juniperus virginiana</i>	7 + 17	Lg	Lg	Good	multi -trunk		
588	Eastern redcedar	<i>Juniperus virginiana</i>	12	Lg	Lg	Good			
589	Norway maple	<i>Acer platanoides</i>	12	Lg	Lg	Good			
590	red maple	<i>Acer rubrum</i>	60	Lg	Lg	Good			
591	Norway maple	<i>Acer platanoides</i>	18	Lg	Lg	Fair			
592	honey locust	<i>Glenditsia triacanthos</i>	3	Sm	Lg	Fair			
593	Norway maple	<i>Acer platanoides</i>	17	Med	Med	Poor			
594	Norway maple	<i>Acer platanoides</i>	18	Med	Med	Fair			
595	honey locust	<i>Glenditsia triacanthos</i>	2	Sm	Lg	Fair			
596	flowering cherry	<i>Prunus serrulata</i>	6	Sm	Sm	Fair			
597	tupelo	<i>Nyssa sylvatica</i>	30	Med	Med	Good			
598	NO TREE TAGGED - lost tag								
599	red maple	<i>Acer rubrum</i>	11+12+12=12	Lg	Lg	Good	multi -trunk		
600	pin oak	<i>Quercus palustris</i>	4	Sm	Lg	Good			
601	pin oak	<i>Quercus palustris</i>	34	Lg	Lg	Good			
602	spruce	<i>Picea sp.</i>	10	Med	Lg	Good			
603	Eastern cottonwood	<i>Populus deltoides</i>	26	Lg	Lg	Good			
604	Norway maple	<i>Acer platanoides</i>	12	Med	Med	Good			
605	pin oak	<i>Quercus palustris</i>	26	Lg	Lg	Good			
606	pin oak	<i>Quercus palustris</i>	24	Lg	Lg	Good			
607	hemlock	<i>Tsuga canadensis</i>	12	Med	Lg	Fair			
608	flowering cherry	<i>Prunus serrulata</i>	3	Sm	Sm	Good			
609	pin oak	<i>Quercus palustris</i>	26	Lg	Lg	Good			
610	red maple	<i>Acer rubrum</i>	22	Lg	Lg	Good			
611	pin oak	<i>Quercus palustris</i>	26	Lg	Lg	Good			
612	white pine	<i>Pinus strobus</i>	17	Med	Lg	Fair			
613	hemlock	<i>Tsuga canadensis</i>	16	Med	Lg	Fair	topped utility prune, poor form, poison ivy		
614	sugar maple	<i>Acer saccharum</i>	14	Med	Lg	Good			
615	flowering cherry	<i>Prunus serrulata</i>	10	Sm	Sm	fair			
616	pin oak	<i>Quercus palustris</i>	36	Lg	Lg	Good			
617	pin oak	<i>Quercus palustris</i>	22	Med	Lg	Poor			

TAG #	Common Name	SPECIES	DBH (2")	Current Height	Mature Height	CONDITION	Notes
	DATE: 9/16/24	COMMUNITY: HAWORTH NJ					
		LOCATION: Pleasant Lane Green Space, Map Area #9 / 40.941273476423476, -73.98183721750362					
TAG #	Common Name	SPECIES	DBH (2")	Current Height	Mature Height	CONDITION	Notes
618	Hinoki cypress	<i>Chamaecyparis obtusa</i>	8	Sm	Med	Good	planted by resident next door?
619	Norway maple	<i>Acer platanoides</i>	8 + 8	Med	Med	Good	multi-trunk
620	walnut	<i>Juglans nigra</i>	10	Med	Lg	Good	
621	red maple	<i>Acer rubrum</i>	22	Lg	Lg	Good	
622	walnut	<i>Juglans nigra</i>	11	Med	Lg	Good	
623	red maple	<i>Acer rubrum</i>	21	Lg	Lg	Good	
624	black cherry	<i>Prunus serotina</i>	4	Sm	Med	Fair	
	STUMP x 3		12, 18, 6				multi-trunk
625	black cherry	<i>Prunus serotina</i>	12	Sm	Med	Fair	steam bank
626	elm	<i>Ulmus sp</i>	9	Sm	Lg	Good	steam bank
627	silver maple	<i>Acer saccharinum</i>	9	Sm	Lg	Good	steam bank
628	elm	<i>Ulmus sp</i>	6	Sm	Lg	Good	steam bank
629	Norway maple	<i>Acer platanoides</i>	7	Sm	Med	Good	steam bank
630	black cherry	<i>Prunus serotina</i>	6	Sm	Med	Fair	
631	red maple	<i>Acer rubrum</i>	20 + 16	Lg	Lg	Good	
632	red maple	<i>Acer rubrum</i>	28	Lg	Lg	Good	multi-trunk
633	ash	<i>Fraxinus sp.</i>	6	Sm	Lg	Good	
634	pin oak	<i>Quercus palustris</i>	28	Lg	Lg	Good	
635	pin oak	<i>Quercus palustris</i>	33	Lg	Lg	Good	
	DATE: 9/16/24	COMMUNITY: HAWORTH NJ					
		LOCATION: Madison/Garfield Green Space, Map Area #12 / 40.960456, -73.978411					
TAG #	Common Name	SPECIES	DBH (2")	Current Height	Mature Height	CONDITION	Notes
636	Eastern redcedar	<i>Juniperus virginiana</i>	26	Lg	Lg	Good	
637	tupelo	<i>Nyssa sylvatica</i>	28	Lg	Lg	Good	
	STUMP	> 50					
	STUMP	> 50					guy wire to utility pole
638	sugar maple	<i>Acer saccharinum</i>	20 + 15	Lg	Lg	Good	multi-trunk
639	red maple	<i>Acer rubrum</i>	26	Lg	Lg	Good	
640	red maple	<i>Acer rubrum</i>	22	Lg	Lg	Fair	
641	Norway spruce	<i>Picea abies</i>	8	Med	Lg	Good	REMOVE porcelain berry vine - smothering tree
642	Norway spruce	<i>Picea abies</i>	8	Med	Lg	Good	REMOVE porcelain berry vine - smothering tree
643	Norway spruce	<i>Picea abies</i>	6	Med	Lg	Good	REMOVE porcelain berry vine - smothering tree

TAG #	Common Name	SPECIES	DBH (2")	Current Height	Mature Height	CONDITION	Notes		
644	Norway spruce	<i>Picea abies</i>	5	Med	Lg	Good			
645	sassafras	<i>Sassafras albidium</i>	3	Sm	Sm	Good			
646	sugar maple	<i>Acer saccharum</i>	27	Lg	Lg	Good			
647	sassafras	<i>Sassafras albidium</i>	6	Sm	Sm	Good			
648	red maple	<i>Acer rubrum</i>	21	Lg	Lg	Fair			
649	red maple	<i>Acer rubrum</i>	19 + 16	Lg	Lg	Fair	multi -trunk		
650	mulberry	<i>Morus sp.</i>	9	Sm	Sm	Fair			
651	red maple	<i>Acer rubrum</i>	18 + 12	Lg	Lg	Fair	multi -trunk		
652	red maple	<i>Acer rubrum</i>	9 + 8 + 18	Lg	Lg	Fair	multi -trunk		